

Nunavut Bureau of Statistics

POPULATION ESTIMATES

JULY 1, 2011

1

Nunavut Population by Age Groups and Sex, July 1, 2011

Age groups	Total	Male	Female	% Change from July 2010 to July 2011		
				Total	Male	Female
TOTAL	33,322	17,170	16,152	1.5%	1.3%	1.7%
0-4	3,730	1,932	1,798	2.4%	2.9%	2.0%
5-9	3,302	1,720	1,582	-2.4%	-3.2%	-1.6%
10-14	3,450	1,788	1,662	1.5%	2.5%	0.5%
15-19	3,170	1,607	1,563	-1.9%	-1.7%	-2.1%
20-24	3,099	1,627	1,472	1.2%	2.1%	0.3%
25-29	2,801	1,372	1,429	2.8%	2.6%	3.0%
30-34	2,582	1,337	1,245	2.0%	2.2%	1.8%
35-39	2,177	1,157	1,020	-0.2%	1.0%	-1.4%
40-44	2,296	1,100	1,196	2.4%	1.7%	3.0%
45-49	1,931	1,009	922	2.4%	-0.4%	5.6%
50-54	1,691	920	771	7.7%	7.1%	8.4%
55-59	1,231	669	562	3.6%	3.4%	3.9%
60-64	799	401	398	2.6%	-1.7%	7.3%
65+	1,063	531	532	4.8%	1.9%	7.9%

As of July 1, 2011 the total population in Nunavut was estimated at 33,322, an increase of 489 people or 1.5% from a year ago. Although there were more males than females in July 2011, the female population increased more rapidly than their male counterparts from July 2010 to July 2011.

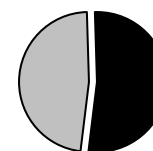
Nunavut has a young population. In July 2011, an estimated 10,482 people were under the age of 15, representing a third of the Territory's population. There was an increase in the 50 to 54 age group at 7.7 % from July 2010 to July 2011.

Source: Statistics Canada, CANSIM table 051-0001

Note: Postcensal estimates are based on the 2006 census counts adjusted for net census undercoverage and for the estimated population growth that occurred since that census. Intercensal estimates are based on postcensal estimates and data adjusted for net census undercoverage of the censuses preceding and following the considered year. Population estimates are final intercensal from 2003 to 2005, final postcensal for 2006 to 2008, updated postcensal for 2009 and 2010 and preliminary postcensal for 2011.

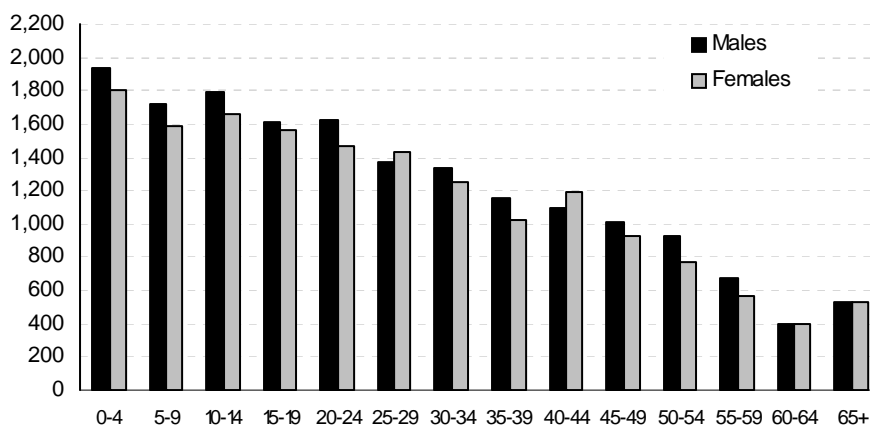
Males and Females % in Nunavut July 1, 2011

Females
48%



Males
52%

Males and Females by Age groups, July 1, 2011



In July 2011, Nunavut's population consisted of 17,170 males (52%) and 16,152 females (48%).

For most age groups, there were more males than females, with the exception of the following age groups 25 to 29, 40 to 44 and 65 and over.

Source: Statistics Canada, CANSIM table 051-0001

2

Nunavut Population by Age Groups and Sex, July 1, 2003 to 2011

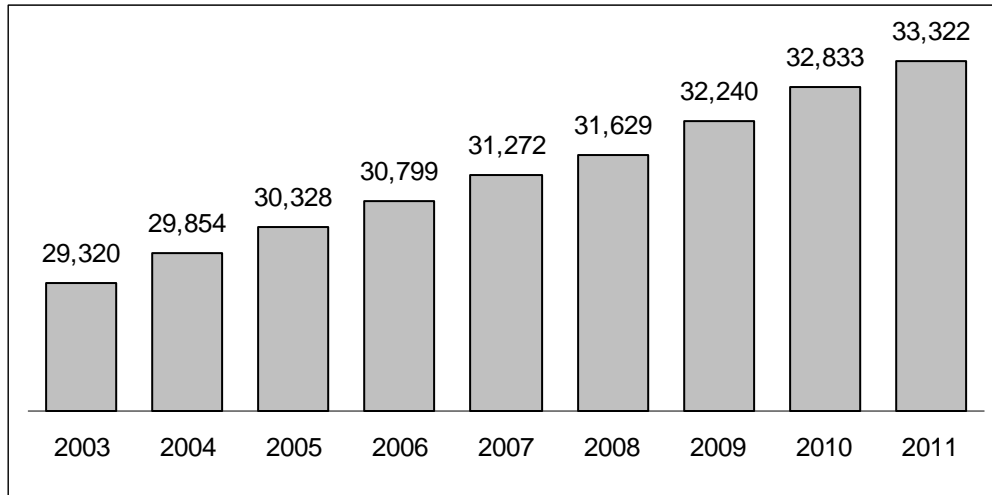
Nunavut Population by Age Groups and Sex, July 1, 2003 to 2011

	2003	2004	2005	2006	2007	2008	2009	2010	2011
Total	29,320	29,854	30,328	30,799	31,272	31,629	32,240	32,833	33,322
0-4	3,521	3,520	3,501	3,531	3,562	3,572	3,594	3,641	3,730
5-9	3,506	3,388	3,388	3,340	3,357	3,367	3,415	3,384	3,302
10-14	3,336	3,370	3,338	3,281	3,304	3,355	3,350	3,399	3,450
15-19	2,861	3,021	3,147	3,276	3,282	3,234	3,258	3,231	3,170
20-24	2,468	2,578	2,623	2,691	2,782	2,883	2,998	3,061	3,099
25-29	2,473	2,480	2,600	2,694	2,695	2,650	2,698	2,725	2,801
30-34	2,518	2,459	2,388	2,357	2,343	2,351	2,401	2,531	2,582
35-39	2,268	2,298	2,336	2,336	2,359	2,279	2,217	2,181	2,177
40-44	1,730	1,844	1,902	1,965	2,065	2,119	2,175	2,243	2,296
45-49	1,408	1,460	1,505	1,580	1,625	1,715	1,830	1,886	1,931
50-54	1,136	1,198	1,256	1,280	1,344	1,418	1,477	1,570	1,691
55-59	851	926	973	1,043	1,032	1,063	1,108	1,188	1,231
60-64	554	565	588	622	677	693	746	779	799
65+	690	747	783	803	845	930	973	1,014	1,063
Males	15,191	15,495	15,726	15,899	16,139	16,392	16,670	16,949	17,170
0-4	1,802	1,813	1,817	1,811	1,849	1,837	1,844	1,878	1,932
5-9	1,770	1,734	1,731	1,707	1,720	1,757	1,801	1,777	1,720
10-14	1,744	1,737	1,693	1,649	1,654	1,673	1,703	1,745	1,788
15-19	1,465	1,558	1,637	1,720	1,713	1,696	1,671	1,635	1,607
20-24	1,266	1,304	1,341	1,357	1,399	1,474	1,551	1,593	1,627
25-29	1,263	1,260	1,292	1,340	1,350	1,302	1,300	1,337	1,372
30-34	1,283	1,273	1,231	1,199	1,220	1,262	1,269	1,308	1,337
35-39	1,210	1,213	1,211	1,224	1,191	1,137	1,139	1,146	1,157
40-44	894	977	1,010	1,027	1,076	1,102	1,087	1,082	1,100
45-49	749	761	789	822	854	913	980	1,013	1,009
50-54	614	648	685	690	730	790	822	859	920
55-59	439	494	533	576	566	591	609	647	669
60-64	285	300	323	345	358	362	388	408	401
65+	407	423	433	432	459	496	506	521	531
Females	14,129	14,359	14,602	14,900	15,133	15,237	15,570	15,884	16,152
0-4	1,719	1,707	1,684	1,720	1,713	1,735	1,750	1,763	1,798
5-9	1,736	1,654	1,657	1,633	1,637	1,610	1,614	1,607	1,582
10-14	1,592	1,633	1,645	1,632	1,650	1,682	1,647	1,654	1,662
15-19	1,396	1,463	1,510	1,556	1,569	1,538	1,587	1,596	1,563
20-24	1,202	1,274	1,282	1,334	1,383	1,409	1,447	1,468	1,472
25-29	1,210	1,220	1,308	1,354	1,345	1,348	1,398	1,388	1,429
30-34	1,235	1,186	1,157	1,158	1,123	1,089	1,132	1,223	1,245
35-39	1,058	1,085	1,125	1,112	1,168	1,142	1,078	1,035	1,020
40-44	836	867	892	938	989	1,017	1,088	1,161	1,196
45-49	659	699	716	758	771	802	850	873	922
50-54	522	550	571	590	614	628	655	711	771
55-59	412	432	440	467	466	472	499	541	562
60-64	269	265	265	277	319	331	358	371	398
65+	283	324	350	371	386	434	467	493	532

Source: Statistics Canada, CANSIM table 051-0001

3

Nunavut Population, July 1, 2003 to 2011



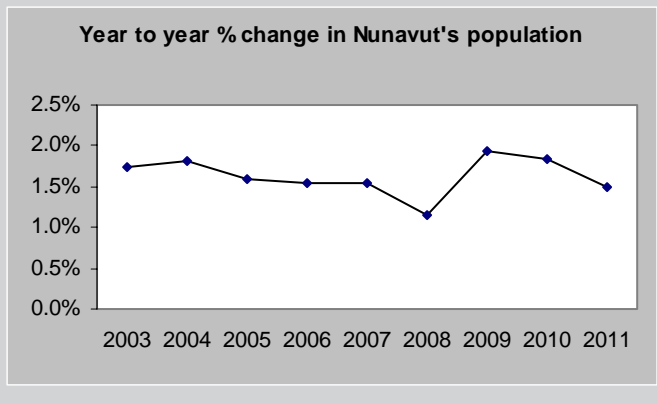
As of July 1, 2011, the population of Nunavut was estimated to be 33,322. Eight years ago, on July 1, 2003, the population was 29,320. From July 2003 to July 2011, the population grew by 4,002 people or 13.6%. This represents an average annual growth rate of 1.7%.

Source: Statistics Canada, CANSIM table 051-0001

4

Historical Population Estimates

Since 2003, Nunavut's population has been steadily increasing, although at a different pace. From 2009 to 2011, the population growth slowed after increasing in 2009.



Nunavut Population, July 1, 2003 to 2011

Year	Population	% Change from previous year
2011	33,322	1.5
2010	32,833	1.8
2009	32,240	1.9
2008	31,629	1.1
2007	31,272	1.5
2006	30,799	1.6
2005	30,328	1.6
2004	29,854	1.8
2003	29,320	1.7

Source: Statistics Canada, CANSIM table 051-0001

5

Community Populations by Age Groups, July 1, 2011

	Age Groups														
	Total	0-4	5-9	10-14	15-19	20-24	25-29	30-34	35-39	40-44	45-49	50-54	55-59	60-64	65+
Nunavut	33,322	3,730	3,302	3,450	3,170	3,099	2,801	2,582	2,177	2,296	1,931	1,691	1,231	799	1,063
Arctic Bay	778	99	81	73	99	85	66	57	44	30	45	37	24	20	18
Arviat	2,308	303	279	279	227	236	175	175	130	143	103	84	68	46	60
Baker Lake	1,938	208	188	241	213	167	137	124	142	168	114	74	49	33	80
Cambridge Bay	1,666	143	145	167	132	143	133	102	110	150	129	148	62	30	72
Cape Dorset	1,427	171	122	156	156	130	93	113	77	100	78	78	54	43	56
Chesterfield Inlet	389	38	39	46	26	33	41	39	30	11	23	11	10	22	20
Clyde River	928	119	103	104	85	92	75	92	47	49	35	47	31	30	19
Coral Harbour	852	121	109	95	89	85	57	68	63	51	27	19	33	14	21
Gjoa Haven	1,161	126	130	144	123	114	110	80	71	64	61	49	37	19	33
Grise Fiord	157	12	22	19	18	14	17	6	5	10	10	7	11	2	4
Hall Beach	725	96	82	95	72	73	57	65	45	27	27	30	26	14	16
Igloodik	1,711	278	205	186	175	141	136	134	114	81	65	71	36	44	45
Iqaluit	7,152	623	497	548	530	615	740	699	581	599	545	466	351	177	181
Kimmirut	466	58	45	45	45	49	31	38	34	28	26	15	14	18	20
Kugaaruk	713	94	92	93	83	60	72	54	48	32	24	16	16	20	9
Kugluktuk	1,450	133	126	138	146	168	109	98	84	113	100	90	43	49	53
Pangnirtung	1,506	185	157	166	140	131	108	109	91	85	88	74	62	31	79
Pond Inlet	1,481	196	158	156	163	138	136	102	75	97	70	68	53	31	38
Qikiqtarjuaq	553	48	50	53	55	40	54	42	43	32	38	29	26	16	27
Rankin Inlet	2,717	268	276	290	271	230	228	172	160	223	183	162	105	47	102
Repulse Bay	838	127	106	80	90	121	55	65	38	42	34	30	18	20	12
Resolute	258	19	35	24	28	22	17	14	15	24	10	22	10	11	7
Sanikiluaq	830	102	90	115	77	71	54	63	66	44	34	25	41	24	24
Taloyoak	878	103	115	90	90	96	65	47	34	67	39	29	31	23	49
Whale Cove	407	59	48	46	37	36	32	24	28	26	20	6	14	13	18
Other areas	33	1	2	1	0	9	3	0	2	0	3	4	6	2	0

Source: Statistics Canada, special tabulations.

Notes: Other areas include Bathurst Inlet, Umingmaktok, Nanisivik; and Baffin, Keewatin and Kitikmeot unorganized areas (e.g., outpost camps). The community population estimates are "non-official" since they are not based on components of population growth (births, deaths and migration). You are advised to use them with caution.

For more statistical information, visit our website at <http://www.gov.nu.ca/eia/stats/index.html>.



March, 2012

Nunavut Bureau of Statistics
 Dep't of Executive & Intergovernmental Affairs
 P. O. Box 604
 Pangnirtung, NU X0A 0R0
 Telephone: (867) 473-2660; Fax: (867) 473-2626
 Email: dkilabuk@gov.nu.ca or mmearns@gov.nu.ca